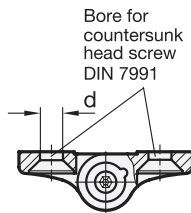
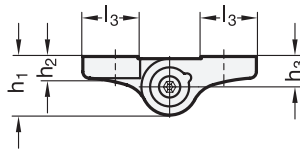
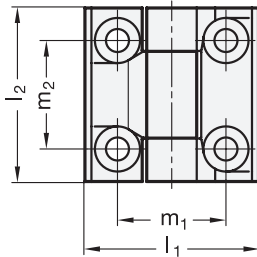




highlights

Hinges with adjustable friction





4 Type

A 2x2 bores
for countersunk head screw

2

3

l_1	l_2	d	h_1	h_2	h_3	h_4	l_3	m_1	m_2	A/F	max. recommended tightening torque of the set screw in Nm	Friction torque in Nm \approx
40	40	5,3	13,5	5	7	14	13	25	25	2,5	1	4
50	50	6,5	15,5	6	8	16	16,5	30	30	3	1,4	6
60	60	8,3	18,5	7,5	9,5	19	20	36	36	4	1,7	8

Specification

1

5

- Zinc die casting **ZD**
plastic coated
black, RAL 9005, textured finish **SW**
silver, RAL 9006, textured finish **SR**
- Friction cone
Plastic (Polyacetal POM)
temperature resistant up to 80 °C
- Set screw / Hexagon nut
Steel
zinc plated, blue passivated
- *Plastic characteristics*
→ Main catalogue Page 1141
- **RoHS compliant**

Information

The set screw fitted to the hinges GN 437 allows the mobility of the hinge to be changed, permitting a constant and adjustable braking torque across the whole of the hinged range. The swivel motion of doors and traps is inhibited and the inadvertent motion is prevented.

The friction torque is accomplished by two slim friction cones being braced against each other. The large friction surface and the low-wear synthetic material of the friction cone guarantee a long service life with virtually constant sluggishness.

Another effect of this type of hinge is that there is no play in axial or radial direction of the hinge.

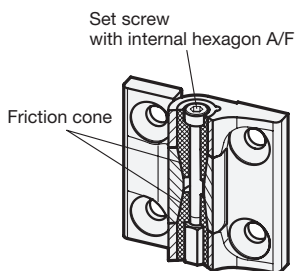
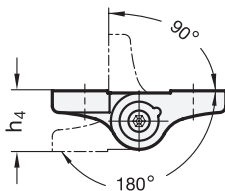
How to order

1	Material
2	l_1
3	l_2
4	Type
5	Finish

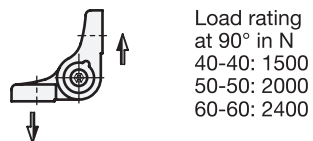
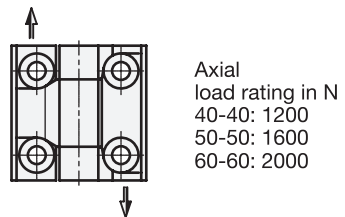
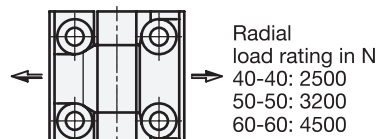
GN 437-ZD-60-60-A-SR



Swivelling range



Load rating



www.ganter-griff.com

Otto Ganter GmbH & Co. KG

Normteilefabrik
Triberger Straße 3
D-78120 Furtwangen
Germany

Phone +49 7723 6507-0
Fax +49 7723 4659
E-Mail info@ganter-griff.com